

Vintron

.....the name you trust



30 YEARS OF EXPERIENCE IN THE FIELD OF ELECTRONICS MANUFACTURING



Complete range of security & surveillance products

All major certifications & registered in GeM

Registered under the Govt "Make in India" scheme



Online technical support

Prompt after sales service & support

AHD/IP/DVR/NVR/POE/POWER SUPPLY/WIRE/4G CAM



Complete Security & Safety Surveillance System Provider

www.vintronsmartvision.com

Follow us:

Office No. : 011-43740011
Toll Free : 1800-121-4322



WHO WE ARE ?

India's leading manufacturing company in electronic security and surveillance products established in 1991. Vintron made its own standing to be a capable and credible Indian manufacturer, which is its biggest strength. Apart from strong manufacturing capabilities, Vintron has PAN India presence in the form of dedicated channel. All the products manufactured and marketed by Vintron comes under its standard 2 year warranty support and are RoHs, CE, FCC, ISO, BIS certified.

All the products manufactured and marketed by us are registered in the Indian governments e-marketplace (GeM). By becoming our channel partner you will get the opportunity to increase your sales by bidding for government tenders on GeM. We have dedicated team who will work alongside you to meet the technical specifications of the tenders.

OUR PRODUCT PORTFOLIO

IP Camera | H.265 NVR (With Smart Analytics) | PoE Switch
 PTZ (Speed Dome Camera) | Warm Light Camera (AHD & IP)
 H.265 / H.265+ DVR (With Smart Analytics) | Mobile DVR
 Home Automation Camera | CCTV Power Supply
 AHD Camera | CCTV Wire



ISO 9001 : 2015



ISO 14001 : 2015



FCC



CE



RoHS



BIS REGISTERED



Our Happy Clients



Aastha Channel



Priyagold



Asian Handicrafts



Vivekanand School



Jaypee Greens



Baba Group



DS Group



Ajay Meru Metal

PROJECT DONE BY VINTRON



18 City Surveillance



180+ Government Projects



20+ Defense Projects



9 Railway Projects



10+ BANKS



90+ Retail Installations



190+ Educational Institutions



50+ Projects in Hospitality Sector



150+ Real Estate



40+ Place of Worships



6 National Highways Projects



120+ Industrial Installations

Complete Range of POE Switches

With Uplink Port, SFP Port & 100M Distance



4PORT POE 10/100M



PoE Ethernet 4*Port: 10/100Mbps | Ethernet Uplink 2*Port: 10/100Mbps
Consumption: 75W(52V 1.44A) | Power Adapter Voltage: AC 110V-240V
Transmission Distance: 250Mtr. | Switching Capacity: 1.2Gbps
Throughput: 0.9Mbps | PoE Standard: IEEE802.3af/at
Color & Weight: Black & 0.95kg

8PORT POE 10/100M



PoE Ethernet 8*Port: 10/100Mbps | Ethernet Uplink 2*Port: 10/100Mbps
Consumption: 120W(52V 2.3A) | Power Adapter Voltage: AC 110V-240V
Transmission Distance: 250Mtr. | Switching Capacity: 2Gbps
Throughput: 1.488Mbps | PoE Standard: IEEE802.3af/at
Color & Weight: Black & 1.05kg

8PORT 1000M POE



PoE Ethernet 8*Port: 1000Mbps | Ethernet Uplink 2*Port: 1000Mbps
SFP 2*Port: 1000Mbps | Consumption: 150W(52V 2.88A)
Power Adapter Voltage: AC 110V-240V | Throughput: 14.88Mbps
Transmission Distance: 100Mtr. | Switching Capacity: 20Gbps
PoE Standard: IEEE802.3af/at | Color & Weight: Black & 2.5kg

16PORT POE 10/100M UPLINK 1000M



PoE Ethernet 16*Port: 10/100Mbps | Ethernet Uplink 2*Port: 1000Mbps
SFP 1*Port: 1000Mbps | Consumption: 250W(52V 4.8A)
Power Adapter Voltage: AC 110V-240V | Throughput: 5.6544Mbps
Transmission Distance: 100Mtr. | Switching Capacity: 7.6Gbps
PoE Standard: IEEE802.3af/at | Color & Weight: Black & 4.2kg

16PORT 1000M POE



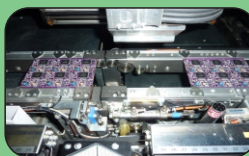
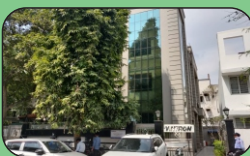
PoE Ethernet 16*Port: 1000Mbps | Ethernet Uplink 2*Port: 1000Mbps
SFP 1*Port: 1000Mbps | Consumption: 250W(52V 4.8A)
Power Adapter Voltage: AC 110V-240V | Throughput: 9.5232Mbps
Transmission Distance: 100Mtr. | Switching Capacity: 12.8Gbps
PoE Standard: IEEE802.3af/at | Color & Weight: Black & 4.2kg

24PORT 1000M POE



PoE Ethernet 24*Port: 1000Mbps | Ethernet Uplink 2*Port: 1000Mbps
SFP 1*Port: 1000Mbps | Consumption: 450W(52V 8.6A)
Power Adapter Voltage: AC 110V-240V | Throughput: 9.5232Mbps
Transmission Distance: 100Mtr. | Switching Capacity: 12.8Gbps
PoE Standard: IEEE802.3af/at | Color & Weight: Black & 5.2kg

In-House Manufacturing



Color View

Warm Light Camera

ONVIF Support
iOS & Android
Motion Detection

REC

00:00:00:01

HD 5MP 19FPS
2592X1920P
IR RANGE 20-30m



IP COLOR CAMERA UP TO 5MP

INDOOR COLOR CAMERA



- HD CMOS Sensor
- IR Dome Camera
- Upto 5mp Resolution
- 3.6mm HD Lens
- 2-Warmlight Array LED's
- IR Distance upto 20-30Mtr.
- PoE & ONVIF Supports
- H.265 / H.265+ Compression
- Plastic Body

OUTDOOR COLOR CAMERA



- HD CMOS Sensor
- IR Bullet Camera
- Upto 5mp Resolution
- 3.6mm HD Lens
- 2-Warmlight Array LED's
- IR Distance upto 20-30Mtr.
- POE & ONVIF Supports
- H.265 / H.265+ Compression
- Plastic Body

OUTDOOR COLOR CAMERA



- HD CMOS Sensor
- IR Bullet Camera
- Upto 5mp Resolution
- 3.6mm HD Lens
- 4-Warmlight Array LED's
- IR Distance upto 20-30Mtr.
- POE & ONVIF Supports
- H.265 / H.265+ Compression
- Metal Body

IP NORMAL CAMERA UP TO 5MP

INDOOR NORMAL CAMERA



- HD CMOS Sensor
- IR Dome Camera
- Upto 5mp Resolution
- 3.6mm HD Lens
- 6-IR Array LED's
- IR Distance upto 20-30Mtr.
- PoE & ONVIF Supports
- H.265 / H.265+ Compression
- Plastic Body

OUTOOR NORMAL CAMERA



- HD CMOS Sensor
- IR Bullet Camera
- Upto 5mp Resolution
- 3.6mm HD Lens
- 6-IR Array LED's
- IR Distance upto 20-30Mtr.
- POE & ONVIF Supports
- H.265 / H.265+ Compression
- Metal Body

OUTDOOR NORMAL CAMERA



- HD CMOS Sensor
- IR Bullet Camera
- Upto 5mp Resolution
- 3.6mm HD Lens
- 6-IR Array LED's
- IR Distance upto 20-30Mtr.
- POE & ONVIF Supports
- H.265 / H.265+ Compression
- Metal Body

ANALOG CAMERA UP TO 5MP

INDOOR NORMAL CAMERA



- HD CMOS Sensor
- IR Dome Camera
- Upto 5mp Resolution
- 3.6mm HD Lens
- 6-IR Array LED's
- IR Distance upto 20-30Mtr.
- 3DNR Supports
- H.265 / H.265+ Compression
- Plastic Body

OUTOOR NORMAL CAMERA



- HD CMOS Sensor
- IR Bullet Camera
- Upto 5mp Resolution
- 3.6mm HD Lens
- 6-IR Array LED's
- IR Distance upto 20-30Mtr.
- 3DNR Supports
- H.265 / H.265+ Compression
- Metal Body

OUTDOOR NORMAL CAMERA



- HD CMOS Sensor
- IR Bullet Camera
- Upto 5mp Resolution
- 3.6mm HD Lens
- 6-IR Array LED's
- IR Distance upto 20-30Mtr.
- 3DNR Supports
- H.265 / H.265+ Compression
- Metal Body



**PROUDLY
INDIAN**

- Surge Protection
- Overload & Short Circuit Protection
- Cable Compensation Switch 12-15vdc
- Resettable Fuse For Each Channel
- Individual Power LED Indicator

SWITCHING MODE POWER SUPPLY



TECHNICAL SPECIFICATIONS	4 CHANNEL	8 CHANNEL	16 CHANNEL
INPUT VOLTAGE	AC 150-275V	AC 150-275V	AC 150-275V
INPUT FREQUENCY	50HZ	50HZ	50HZ
INPUT CURRENT	200 MA @230V	290 MA @230V	480 MA @230V
OUTPUT VOLTAGE	DC12V-DC15V	DC12V-DC15V	DC12V-DC15V
OUTPUT CURRENT	1AMP MAX. (PER CH.)	1AMP MAX. (PER CH.)	1AMP MAX. (PER CH.)
EFFICIENCY AT FULL LOAD @230V AC	>85%	>85%	>85%
	<1%	<1%	<1%
	114MMX138MMX36MM	127MMX140MMX36MM	200MMX140MMX37MM
	2 PIN	2 PIN	2 PIN
	250 GMS	286 GMS	505 GMS

355° MONITORING

Rotation Range Pan:0°-355° & Tilt:0°-90°



WiFi
3MP
PAN TILT
355 CAMERA

Key Features:

Easy to plug & play | Full HD Video | 355 Degree View Angle | Two Way Audio
Motion Tracking | Motion Alert | Privacy Mode | 128GB SD Card Support

AHD / IP PTZ CAMERA

Features :

- 2MP / 4MP HD CMOS
- Resolu?on 2MP(1920x1080P), 4MP(2560x1440P)
- 6+1 Big size IR Array
- IR Distance up to 150Mtr.
- 36X Op?cal zoom
- IP 66 Weatherproof
- 360° Unlimited rota?on
- OSD Func?on
- Auto scan
- H.264 / H.265 Supported



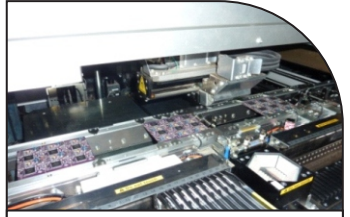
MANUFACTURING CAPABILITIES



COMPONENT LEVEL REPAIR



10 HIGH SPEED SMT MACHINES



5LAC CAMERA BOARD/MONTH



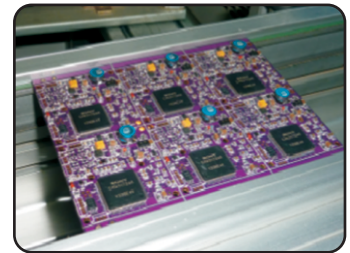
QUALITY ASSURANCE



IN-HOUSE SETUP



>200 QUALIFIED WORKERS



Vintron

.....the name you trust

Head Office:

D-107-108, Okhla Industrial Area Phase-1,
South Delhi, Delhi-110020, India.
Contact : +91-011-43740011 / 19
Toll Free: 1800 121 4322
Email : lead@vintronsmartvision.com
Website: www.vintronsmartvision.com

Technical Support:

Contact: +91-11-43740015/16
Toll Free: 1800 121 4322
Email: support@vintronsmartvision.com
Hand Phone: +91-9310014641

Service Center:

Contact: +91-11-43740021
Email: servicecenter@vintronsmartvision.com
Hand Phone: +91-9310252613

Distributed By :



आत्मनिर्भर भारत, सशक्त भारत

