

PRODUCT CATALOGUE

Surveillance & Networking Solution



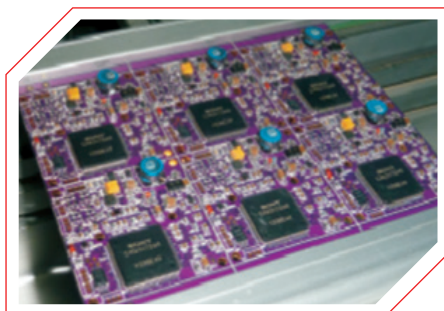
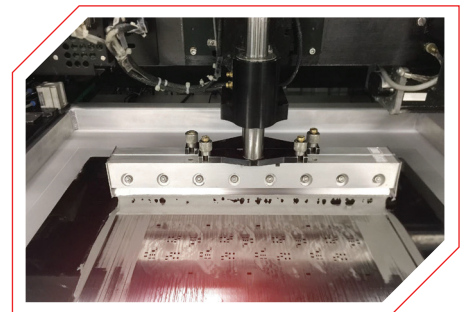
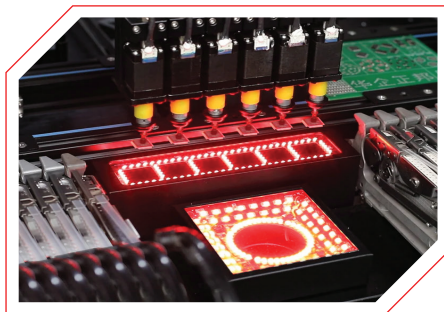
SMT PCB JOBWORK

We are electronic manufacturer



WE OFFER VARIOUS SERVICES

- ▶ SMT (Surface Mount Technology) PCB assembly
- ▶ High-precision pick-and-place component mounting
- ▶ Solder paste screen printing (stencil-based)
- ▶ Reflow soldering for SMD components
- ▶ Single-sided & double-sided SMT assembly
- ▶ Mixed technology assembly (SMD + Through-Hole)
- ▶ Functional testing / ICT testing



PoE SWITCHES

Connect all network device with Network PoE Switch



IP PHONE



CCTV CAMERA



WIFI



ACCESS CONTROL



LAPTOP

PREMIUM 4-PORT NORMAL PoE SWITCH **4CH**








VIN-PoE-42N

- PoE Ethernet 4*10/100Mbps Ports
- Ethernet Uplink 2*10/100Mbps Ports
- Power Budget: 75W(52V 1.44A)
- Power Adapter Voltage: AC 110V-240V
- Transmission Distance: 250Mtr.
- Switching Capacity: 1.2Gbps
- Throughput: 0.9Mbps
- PoE Standard: IEEE802.3af/at
- Color & Weight: Black & 0.95Kg

PREMIUM 4-PORT FULL GIGA PoE SWITCH **4CH**








VIN-PoE-42FGS

- PoE Ethernet 4*10/100Mbps Ports
- Ethernet Uplink 2*1000Mbps Ports
- SFP 1*Port: 1000Mbps
- Power Budget: 120W (52V 2.3A)
- Power Adapter Voltage: AC 110V-240V
- Transmission Distance: 250Mtr.
- Switching Capacity: 12Gbps
- Throughput: 8.928Mbps
- PoE Standard: IEEE802.3af/at
- Color & Weight: Black & 1.05Kg

PREMIUM 8-PORT NORMAL PoE SWITCH **8CH**








VIN-PoE-82N

- PoE Ethernet 8*10/100Mbps Ports
- Ethernet Uplink 2*10/100Mbps Ports
- Power Budget: 120W
- Power Adapter Voltage: AC 110V-240V
- Transmission Distance: 250Mtr.
- Switching Capacity: 2Gbps
- Throughput: 1.488Mbps
- PoE Standard: IEEE802.3af/at
- Color & Weight: Black & 0.95Kg

PREMIUM 8-PORT UPLINK GIGA POE SWITCH **8CH**








VIN-PoE-82NGS

- PoE Ethernet 8*10/100Mbps Ports
- Ethernet Uplink 2*1000Mbps Ports
- Power Budget: 120W (52V 2.3A)
- Power Adapter Voltage: AC 110V-240V
- Transmission Distance: 100Mtr.
- Switching Capacity: 5.6Gbps
- Throughput: 4.1664Mbps
- PoE Standard: IEEE802.3af/at
- Color & Weight: Black & 1.05Kg

PREMIUM 8-PORT FULL GIGA PoE SWITCH **8CH**













VIN-PoE-82FGS

- PoE Ethernet 8*10/100Mbps Ports
- Ethernet Uplink 2*1000Mbps Ports
- SFP Port: 2*1000M Slot
- Power Budget: 150W (52V 2.88A)
- Power Adapter Voltage: AC 110V-240V
- Transmission Distance: 250Mtr.
- Switching Capacity: 20Gbps
- Throughput: 14.88Mbps
- PoE Standard: IEEE802.3af/at
- Color & Weight: Black 2.5Kg

PREMIUM 16-PORT UPLINK GIGA PoE SWITCH **16CH**



VIN-PoE-16N2G1S

- PoE Ethernet 16*10/100Mbps PoE Ports
- Ethernet Uplink 2*1000Mbps Ports
- SFP Port: 1*1000M Slot
- Power Budget: 250W (52V 4.8A)
- Power Adapter Voltage: AC 110V-240V
- Transmission Distance: 250Mtr.
- Switching Capacity: 7.2Gbps
- Throughput: 5.3568Mbps
- PoE Standard: IEEE802.3af/at
- Color & Weight: Black & 4.2Kg

PREMIUM 16-PORT FULL GIGA PoE SWITCH **16CH**








VIN-PoE-16G2G1SF

- PoE Ethernet 16*10/100Mbps PoE Ports
- Ethernet Uplink 2*1000Mbps Ports
- SFP Port: 1*1000M Slot
- Power Budget: 300W (52V 5.76A)
- Power Adapter Voltage: AC 110V-240V
- Transmission Distance: 250Mtr.
- Switching Capacity: 38Gbps
- Throughput: 29.41Mbps
- PoE Standard: IEEE802.3af/at
- Color & Weight: Black & 0.95Kg

PREMIUM 24-PORT UPLINK GIGA PoE SWITCH **24CH**








VIN-PoE-24N2G2S

- PoE Ethernet 24*10/100Mbps PoE Ports
- Ethernet Uplink 2*1000Mbps Ports
- SFP Port: 2*1000M Slot
- Power Budget: 300W (52V, 5.76A)
- Power Adapter Voltage: AC 110V-240V
- Transmission Distance: 250Mtr.
- Switching Capacity: 12.8Gbps
- Throughput: 9.5232Mbps
- PoE Standard: IEEE802.3af/at
- Color & Weight: Black & 2.65Kg

PREMIUM 24-PORT FULL GIGA PoE SWITCH **24CH**








VIN-PoE-24G2G2SF

- PoE Ethernet 24*10/100Mbps PoE Ports
- Ethernet Uplink 2*1000Mbps Ports
- SFP Port: 2*1000M Slot
- Power Budget: 300W (52V, 5.76A)
- Power Adapter Voltage: AC 110V-240V
- Transmission Distance: 100Mtr.
- Switching Capacity: 56Gbps
- Throughput: 43.34Mbps
- PoE Standard: IEEE802.3af/at
- Color & Weight: Black & 5.68Kg

4-PORT PoE SWITCH **4CH**








VIN-PoE-42

- PoE Ethernet 4*10/100Mbps Ports
- Ethernet Uplink 2*10/100Mbps Ports
- Power Budget: 65W (52V 1.25A)
- Power Adapter Voltage: AC 110V-240V
- Transmission Distance: 250Mtr.
- Switching Capacity: 1.2Gbps
- Throughput: 0.8928Mbps
- PoE Standard: IEEE802.3af/at
- Color & Weight: Black & 0.81Kg

8-PORT PoE SWITCH **8CH**


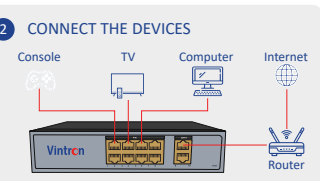








VIN-PoE-82

- PoE Ethernet 8*10/100Mbps Ports
- Ethernet Uplink 2*10/100Mbps Ports
- Power Budget: 96W (52V 1.84A)
- Power Adapter Voltage: AC 110V-240V
- Transmission Distance: 250Mtr.
- Switching Capacity: 2Gbps
- Throughput: 1.488Mbps
- PoE Standard: IEEE802.3af/at
- Color & Weight: Black & 0.81Kg

- CONNECT TO POWER**

- CONNECT THE DEVICES**

- ENJOY**


AHD TVI SERIES



ALERT
Human Detection



IR LED'S
2/3/4 Warmlight LED's



HD
HIGH DEFINITION
Resolution



RGB
Full Color*



AUDIO
In-Built Mic

Advanced technology enables high-quality video monitoring even in low-light conditions with AOC function

2MP

2MP AHD TVI PLASTIC BULLET CAMERA



VS-ABP2030WL-AOC

- 1/2.9" HD-CMOS
- WL Plastic Bullet Camera
- 2.0MP Resolution @ (1920x1080)P
- 3.6mm HD Lens (6mm, 8mm Optional)
- 4-Warm Light LED's
- Built In Mic Camera
- Distance upto 20-30Mtr.
- Audio Over Co-Axial
- H.265 / H.265+ Supported

5MP

5MP AHD TVI PLASTIC BULLET CAMERA



VS-ABP5020WL-AOC

- 1/2.8" HD-CMOS
- WL Plastic Bullet Camera
- 5.0MP Resolution @ (2560X1920)P
- 3.6mm HD Lens (6mm, 8mm Optional)
- 4-Warm Light LED's
- Built In Mic Camera
- Distance upto 20-30Mtr.
- Audio Over Co-Axial
- H.265 / H.265+ Supported

2MP

2MP AHD TVI PLASTIC DOME CAMERA



VS-ADP2020WL-AOC

- 1/2.9" HD-CMOS
- WL Plastic Dome Camera
- 2.0MP Resolution @ (1920x1080)P
- 3.6mm HD Lens (6mm, 8mm Optional)
- 4-Warm Light LED's
- Built In Mic Camera
- Distance upto 20-30Mtr.
- Audio Over Co-Axial
- H.265 / H.265+ Supported

5MP

5MP AHD TVI PLASTIC DOME CAMERA



VS-ADP5020WL-AOC

- 1/2.8" HD-CMOS
- WL Plastic Dome Camera
- 5.0MP Resolution @ (2560X1920)P
- 3.6mm HD Lens (6mm, 8mm Optional)
- 4-Warm Light LED's
- Built In Mic Camera
- Distance upto 20-30Mtr.
- Audio Over Co-Axial
- H.265 / H.265+ Supported

VIDEO RECORDER

NVR NETWORK VIDEO RECORDER



INSTASTREAM



8/16/32 CH.



RESOLUTION



MOBILE VIEWING



STORAGE 6TB



ONVIF COMPLIANT

8MP 8-CHANNEL NETWORK VIDEO RECORDER

VIN-NVR-8108-4KW

4K



- Chipset SSR621Q
- IP Camera Input: 8Ch, 4K
- Bandwidth: 80Mbps
- Audio: 8Ch Network Audio input
- Local playback: 8Ch
- Digital Zoom & PTZ Control: Yes
- Protocol: ONVIF
- Upto 6TB SATA Interface HDD*1
- H.264 / H.265 Standard Video compression

8MP 16-CHANNEL NETWORK VIDEO RECORDER

VIN-NVR-8116-4KW

4K



- Chipset SSR621Q
- IP Camera Input: 16Ch, 4K
- Bandwidth: 80Mbps
- Audio: 16Ch Network Audio input
- Local playback: 16Ch
- Digital Zoom & PTZ Control: Yes
- Protocol: ONVIF
- Upto 6TB SATA Interface HDD*1
- H.264 / H.265 Standard Video compression

8MP 32-CHANNEL NETWORK VIDEO RECORDER

VIN-NVR-8232-4KW

4K



- Chipset Hi3536C
- IP Camera Input: 32Ch, 4K
- Bandwidth: 150Mbps
- Audio: 32Ch Network Audio input
- Local playback: 16Ch
- Digital Zoom & PTZ Control: Yes
- Protocol: ONVIF
- Upto 6TB SATA Interface HDD*2
- H.264 / H.265 Standard Video compression

DVR DIGITAL VIDEO RECORDER



INSTASTREAM



8/16/32 CH.



RESOLUTION



MOBILE VIEWING



STORAGE 6TB



ONVIF COMPLIANT

5MP 4-CHANNEL DIGITAL VIDEO RECORDER

VS-AX10104

5in1



- Chipset Mc6630
- Video Input: 4Ch BNC
- Video Output: HDMI*1/VGA*1
- Audio: 1Ch RCA input, 1Ch RCA Output, 4Ch AOC
- Playback: 4Ch Playback
- Up to 10TB SATA Interface HDD*1
- IVA Video Analytics, Line Crossing, Object Detection.
- Support, Android, iPhone, Mac.
- Upgrade / Backup: Network / USB Disk
- H.264 / H.265 Standard Video compression
- Supports: HDCVI, AHD, TVI, CVBS & IP Video Input

5MP 8-CHANNEL DIGITAL VIDEO RECORDER

VS-AX10108

5in1



- Chipset Mc6630
- Video Input: 8Ch BNC
- Video Output: HDMI*1/VGA*1
- Audio: 1Ch RCA input, 1Ch RCA Output, 8Ch AOC
- Playback: 8Ch Playback
- Up to 10TB SATA Interface HDD*1
- IVA Video Analytics, Line Crossing, Object Detection.
- Support, Android, iPhone, Mac.
- Upgrade / Backup: Network / USB Disk
- H.264 / H.265 Standard Video compression
- Supports: HDCVI, AHD, TVI, CVBS & IP Video Input

5MP 16-CHANNEL DIGITAL VIDEO RECORDER

VS-AX10216

5in1



- Chipset TVI3521A
- Video Input: 16Ch BNC
- Video Output: HDMI*1/VGA*1
- Audio: 1Ch RCA input, 1Ch RCA Output, 16Ch AOC
- Playback: 16Ch Playback
- Up to 10TB SATA Interface HDD*2
- IVA Video Analytics, Line Crossing, Object Detection.
- Support, Android, iPhone, Mac.
- Upgrade / Backup: Network / USB Disk
- H.264 / H.265 Standard Video compression
- Supports: HDCVI, AHD, TVI, CVBS & IP Video Input

CCTV POWER SUPPLY



OVERLOAD PROTECTION



HIGH VOLTAGE PROTECTION



SHORT CIRCUIT PROTECTION



OVERHEAT PROTECTION



LONG DISTANCE TRANSMISSION

SMPS SWITCHED MODE POWER SUPPLY PLASTIC (Multiple Output)

4-PORT CCTV PLASTIC POWER SUPPLY

4CH



Auto Reset on Overload



Adjustable Output Voltage



Switch Mode Power Supply



Surge Protection

VIN-PS04

- Input Current- 200 mA @230V
- Output Voltage- DC 12V- DC 15V (4Amp)
- Output current- 4000 mA Max.
- Output power On- Green LED Indication
- Input Frequency: 50Hz
- Efficiency at Full Load @230V AC: >85%
- Line Regulation: <1%
- Load Regulation: <1%
- Input Cord: 2 Pin



8-PORT CCTV PLASTIC POWER SUPPLY

8CH



Auto Reset on Overload



Adjustable Output Voltage



Switch Mode Power Supply



Surge Protection

VIN-PS08

- Input Current- 290 mA @230V
- Output Voltage- DC 12V- DC 15V (8Amp)
- Output current- 8000 mA Max.
- Output power On- Green LED Indication
- Input Frequency: 50Hz
- Efficiency at Full Load @230V AC: >85%
- Line Regulation: <1%
- Load Regulation: <1%
- Input Cord: 2 Pin



16-PORT CCTV PLASTIC POWER SUPPLY

16CH



Auto Reset on Overload



Adjustable Output Voltage



Switch Mode Power Supply



Surge Protection

VIN-PS16

- Input Current- 590 mA @230V
- Output Voltage- DC 12V- DC 15V (16Amp)
- Output current- 16000 mA Max.
- Output power On- Green LED Indication
- Input Frequency: 50Hz
- Efficiency at Full Load @230V AC: >85%
- Line Regulation: <1%
- Load Regulation: <1%
- Input Cord: 2 Pin



SMPS SWITCHED MODE POWER SUPPLY METAL (Single Output)



Auto Reset on Overload



Switch Mode Power Supply



Adjustable Output Voltage



Surge Protection

4-PORT CCTV METAL POWER SUPPLY

4CH



Auto Reset on Overload



Switch Mode Power Supply



Adjustable Output Voltage



Surge Protection

VIN-PS04M

- Input Current- 200 mA @230V
- Output 4CH
- Input Frequency: 50Hz
- Efficiency at Full Load @230V AC: >85%
- Line Regulation: <1%
- Load Regulation: <1%
- Input Cord: 2 Pin



8-PORT CCTV METAL POWER SUPPLY

8CH



Auto Reset on Overload



Switch Mode Power Supply



Adjustable Output Voltage



Surge Protection

VIN-PS08M

- Input Current- 290 mA @230V
- Output 8CH
- Input Frequency: 50Hz
- Efficiency at Full Load @230V AC: >85%
- Line Regulation: <1%
- Load Regulation: <1%
- Input Cord: 2 Pin



PoE PoE POWER SUPPLY



3-PIN AC POWER SOCKET



2-PIN DC OUTPUT



LED INDICATION

VIN-PoE-PS-4E

4E



3-pin Ac Power Socket

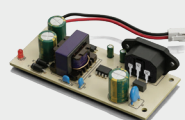


2-pin Dc Output



Led Indication

- Input Current- 110V-240V
- Output-52V 65W



VIN-PoE-PS-4N

4N



3-pin Ac Power Socket

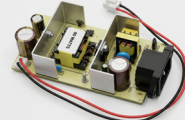


2-pin Dc Output



Led Indication

- Input Current- 110V-240V
- Output-52V 80W



VIN-PoE-PS-8E

8E



3-pin Ac Power Socket

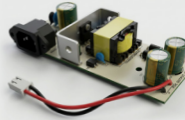


2-pin Dc Output



Led Indication

- Input Current- 110V-240V
- Output-52V 96W



VIN-PoE-PS-8N

8N



3-pin Ac Power Socket

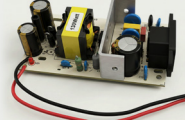


2-pin Dc Output



Led Indication

- Input Current- 110V-240V
- Output-52V 130W



VIN-PoE-PS-8G

8G



3-pin Ac Power Socket



2-pin Dc Output



Led Indication

- Input Current- 110V-240V
- Output-52V 150W



ACCESSORIES



OVERHEAT PROTECTION



SHORT CIRCUIT PROTECTION



OVERCHARGE PROTECTION



OVER CURRENT PROTECTION



ADAPTER POWER SUPPLY

VIN-PS12V1A

1Amp

- Overheat Protection
- Short Circuit Protection
- Overcharge Protection
- Over Current Protection



- Input Current- 110V-240V
- Output-12V 1Amp

VIN-PS12V2A

2Amp

- Overheat Protection
- Short Circuit Protection
- Overcharge Protection
- Over Current Protection



- Input Current- 110V-240V
- Output-12V 2Amp

VIN-PS12V3A

3Amp

- Overheat Protection
- Short Circuit Protection
- Overcharge Protection
- Over Current Protection



- Input Current- 110V-240V
- Output-12V 3Amp

VIN-PS12V5A

5Amp

- Overheat Protection
- Short Circuit Protection
- Overcharge Protection
- Over Current Protection



- Input Current- 110V-240V
- Output-12V 5Amp



POWER CORD



18 AMERICAN WIRE GAUGE



LOW HEAT GENERATION



100% COPPER WIRE



SHOCK & OVER VOLTAGE PROTECTION

POWER CABLE 1M



- 18 AWG 18 American Wire Gauge
- Low Heat Generation
- 100% Copper Wire
- Shock & Over Voltage Protection

6Amp

VIN-1M-PC-3P

- 250V 6Amp
- High Quality PVC Shell
- Indian 3P type D
- Copper Wire
- 3 Pack Pure Copper Buckle
- Fireproof material
- PVC Cable Jacket
- Gauge 14/40
- Black Color



POWER EXTENTION BOARD



HANDLES UP TO 1.5KW



OVERLOAD PROTECTION



SHORT CIRCUIT PROTECTION



REPLACEABLE FUSE



SPECIAL CONTACT DESIGN



LED ON/OFF INDICATOR

FOUR-WAY EXTENSION BOARD



6Amp

VIN-ETB-4W6A

- Spike and surge protection
- Four 3-Pin Universal Sockets
- Fire Retardant Cable
- Cable Length: 2 Mtr
- Four 3-Pin Sockets
- Rating: 6A, 220-240 Vac
- Rated Frequency: 50 Hz
- Max Power Handling: 1500W

Vintron

.....the name you trust



VINTRON SMARTVISION PRIVATE LIMITED.

CORPORATE OFFICE: D-138, OKHLA INDUSTRIAL AREA PHASE-1, NEW DELHI-110020, INDIA.

LEAD@VINTRONSMARTVISION.COM | MARKETING@VINTRONSMARTVISION.COM

WWW.VINTRONSMARTVISION.COM

TOLL FREE: 1800 121 4322

